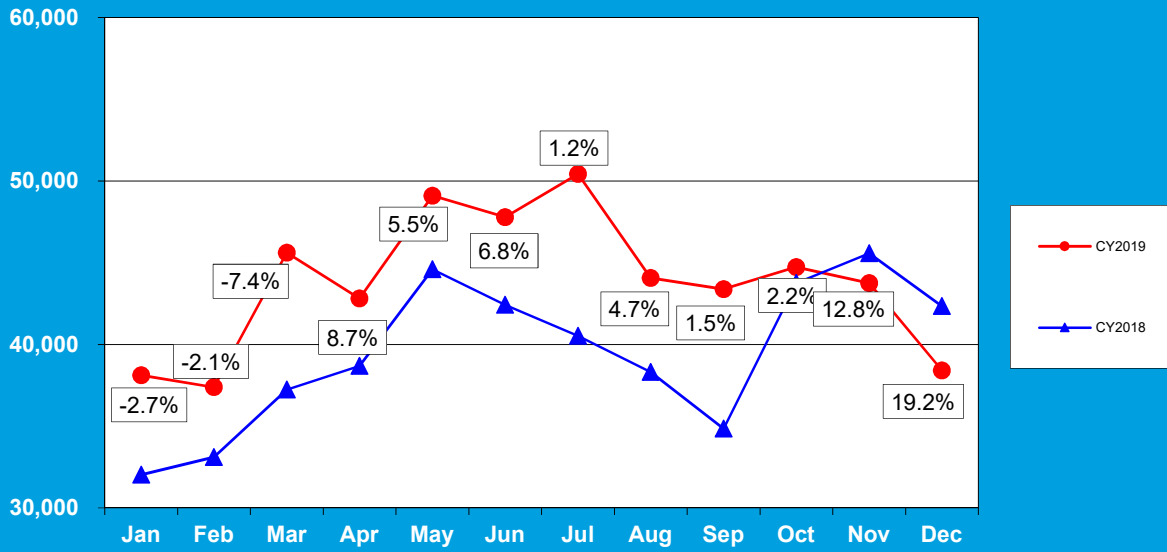
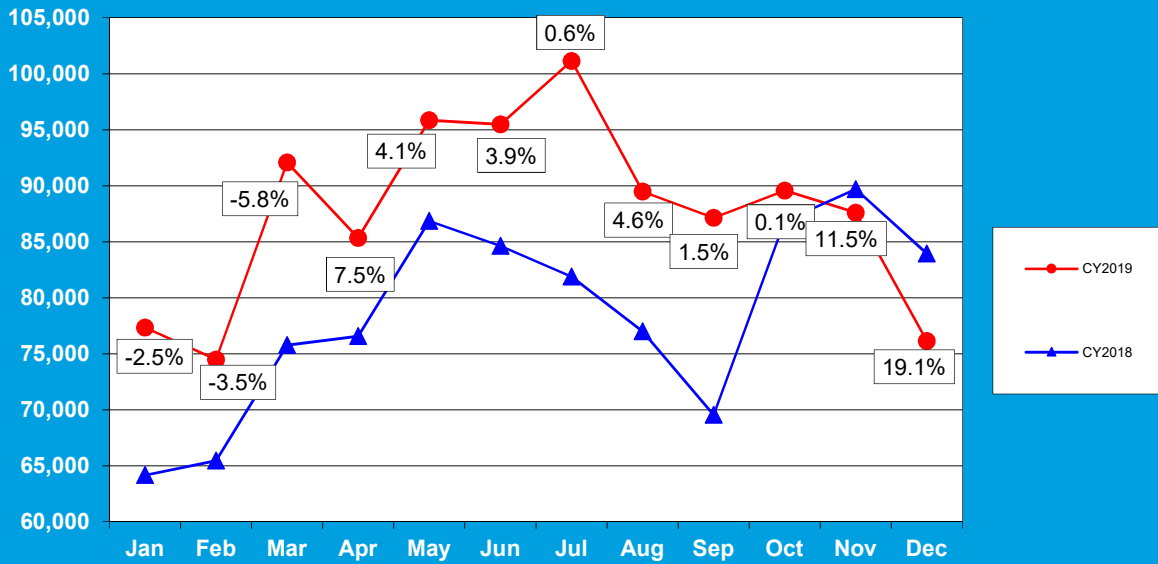


### CY2018 vs CY2019 Enplaned Passengers



	<u>2018</u>	<u>2019</u>	<u>VARIANCE YTD</u>
Jan	32,033	38,116	19.0%
Feb	33,115	37,389	12.9%
Mar	37,240	45,608	22.5%
Apr	38,683	42,814	10.7%
May	44,606	49,106	10.1%
Jun	42,422	47,792	12.7%
Jul	40,525	50,431	24.4%
Aug	38,322	44,077	15.0%
Sep	34,856	43,377	24.4%
Oct	43,758	44,739	2.2%
Nov	45,575	43,755	-4.0%
Dec	42,356	38,422	-9.3%
	<b>473,491</b>	<b>525,626</b>	

**CY2018 vs. CY2019 Enplaned & Deplaned Passengers**



	<u>2018</u>	<u>2019</u>	<u>VARIANCE YTD</u>
Jan	64,159	77,338	20.5%
Feb	65,468	74,496	13.8%
Mar	75,770	92,074	21.5%
Apr	76,576	85,326	11.4%
May	86,841	95,860	10.4%
Jun	84,624	95,487	12.8%
Jul	81,871	101,148	23.5%
Aug	76,988	89,477	16.2%
Sep	69,540	87,143	25.3%
Oct	86,867	89,559	3.1%
Nov	89,690	87,589	-2.3%
Dec	83,949	76,149	-9.3%
	<b>942,343</b>	<b>1,051,646</b>	